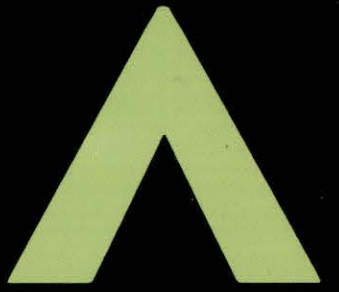




Arizona Strip
Field Office



Colorado City Access Map



COLORADO CITY ACCESS MAP

Printed March 2021

Colorado City Access Map was developed to show the designated routes available for the public to use in the Colorado City Travel Management Area of the Arizona Strip Field Office. Initial funding for the printing of this map was provided by Arizona State Parks and Trails.

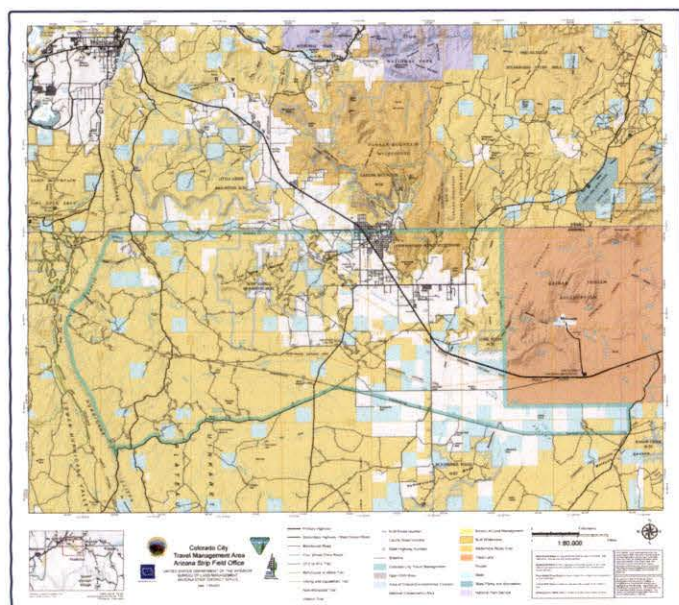


Kaibab Plateau from County Road 5

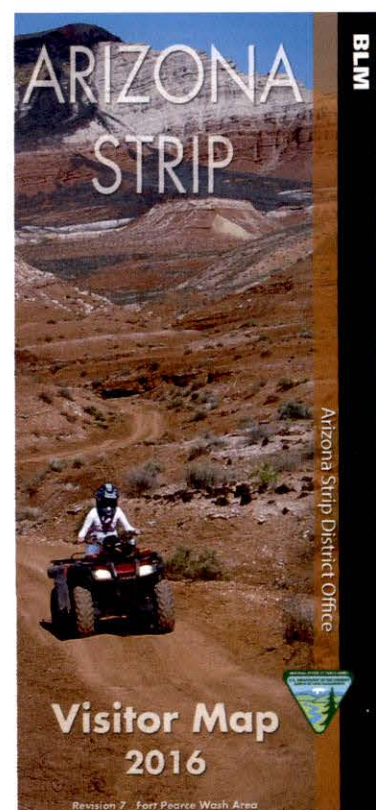
BLM maps are available for free digitally as maps through Avenza Map app and as PDFs. Avenza Map is an app available for iOS and Android mobile devices. Avenza Maps can pinpoint your location on a pre-loaded map.

Avenza Maps for BLM lands in Arizona are at:
<https://www.avenzamaps.com/vendor/1600/>

BLM maps in PDF format at:
<https://www.blm.gov/maps>



Know where you are, download the flat, Avenza Map version of this map book!



The Arizona Strip Visitor Map shows routes, ownership, and boundaries for the entire Arizona Strip District and surrounding areas.

COLORADO CITY ACCESS MAP 2021

The BLM's Travel Management program aims to provide reasonable and varied transportation routes for access to the public lands, and also provide opportunities for a wide variety of both motorized and non-motorized recreational activities. By improving Off Highway Vehicle (OHV) management, the BLM is minimizing impacts to wildlife habitat, special status plants, and soil resources; reducing the introduction and spread of invasive weeds; lessening conflicts among various motorized and non-motorized recreation users; and preventing damage to cultural resources resulting from the expansion of roads and trails on public lands.

Route Designations

This map publication highlights the routes designated open for public use in February of 2018 when the EA *Proposed Transportation Network for Littlefield, St. George Basin and Colorado City Travel Sub-Regions* was completed. Routes not shown on these maps are not designated open for public use. Users are responsible for knowing and adhering to the designations of the routes they are using. Use of these closed routes could result in a citation and restoration fees enforced under 43 CFR 8341.1(c).

PDF and Avenza versions of this map book are available for free. These maps can be loaded to IOS and Android mobile devices allowing offline, real-time GPS tracking.

Description of the Colorado City TMA

Colorado City is the Arizona Strip Field Office's travel management area (TMA) located south and west of the city of Colorado City, Arizona. The TMA is dominated by flat plains created by the caprock of the Kaibab and Toroweap Limestones. The northern portion of the TMA has the towering cliffs of the Navajo Sandstone of the Cottonwood Point Wilderness. Many of the routes were created by ranching activities.

Within the Colorado City TMA is the Lost Springs Mountain Area of Critical Environmental Concern (ACEC) designated for the protection of cultural resources. Please obey the signs with the ACEC boundary by staying on designated routes to help protect these cultural resources.

Also within the Colorado City TMA is the Honeymoon Historic Trail. This trail was used from late 19th and early 20th century by early pioneers to travel by horsedrawn wagons to the St. George Temple. Some of the sections of this trail are open to motorized use; some are not. Please refer to map to know where motorized travel is allowed.

Route Types

Main Gravel Road is considered the best access in a given area. High clearance vehicles are still recommended.

Maintained Road is fairly regularly maintained gravel and dirt road where high clearance and possibly four wheel drive vehicles are recommended.

Four Wheel Drive Route is where classic four-wheel drive suspension is recommended.

UTV or ATV Trail is limited to vehicles with a width of 50 inches or less.

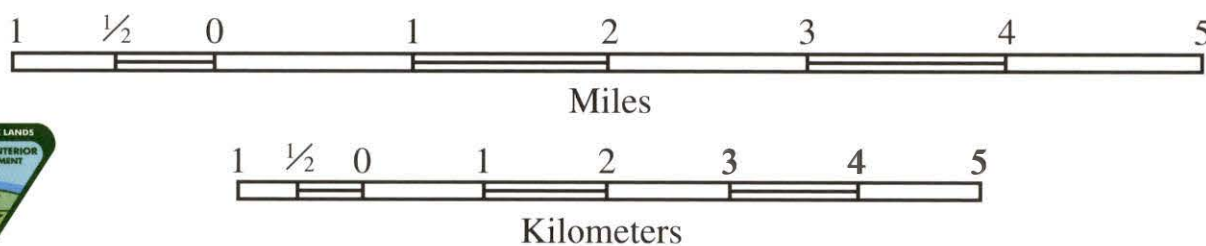
Motorcycle or eBike Trail is limited to single track modes of travel.

Hiking and Equestrian Trail is limited to only foot and horse travel.

DISCLAIMERS:

Travel routes depicted on this map across Arizona State Trust Lands or private lands do not imply legal public access to use or cross those lands. Any public use of State trust lands is strictly under the jurisdiction of the Arizona State Land Department and use of private lands requires permission of the land owner. All users must comply with State policies and regulations and private land owner rights in order to legally use or traverse non-BLM lands.

No warranty is made by the BLM as to the accuracy, reliability, or completeness of these data for individual use or aggregate use with other data. Original data were compiled from various sources. This information may not meet National Map Accuracy Standards. This product was developed through digital means and may be updated without notification.



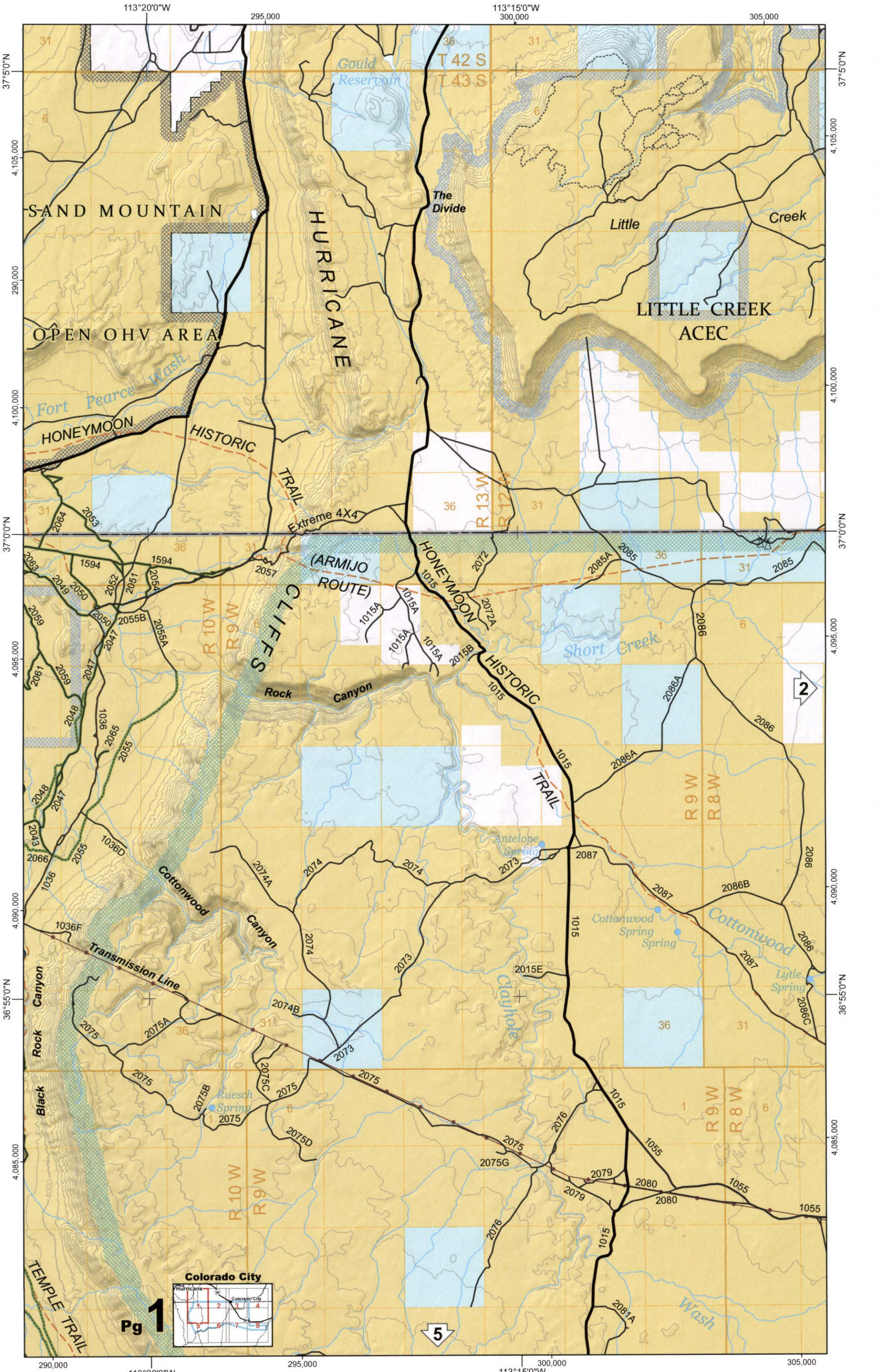
Coordinate System: NAD 1983 Lambert Conformal Conic
Projection: Lambert Conformal Conic
Datum: North American 1983
Latitude-Longitude Interval: 5 minutes
UTM Interval: 5,000 meters

Scale 1:65,000
1" = 1.026 Miles
Elevations are given in feet
Contour interval: 100 feet

Initial Funding provided by
Arizona State Parks and Trails

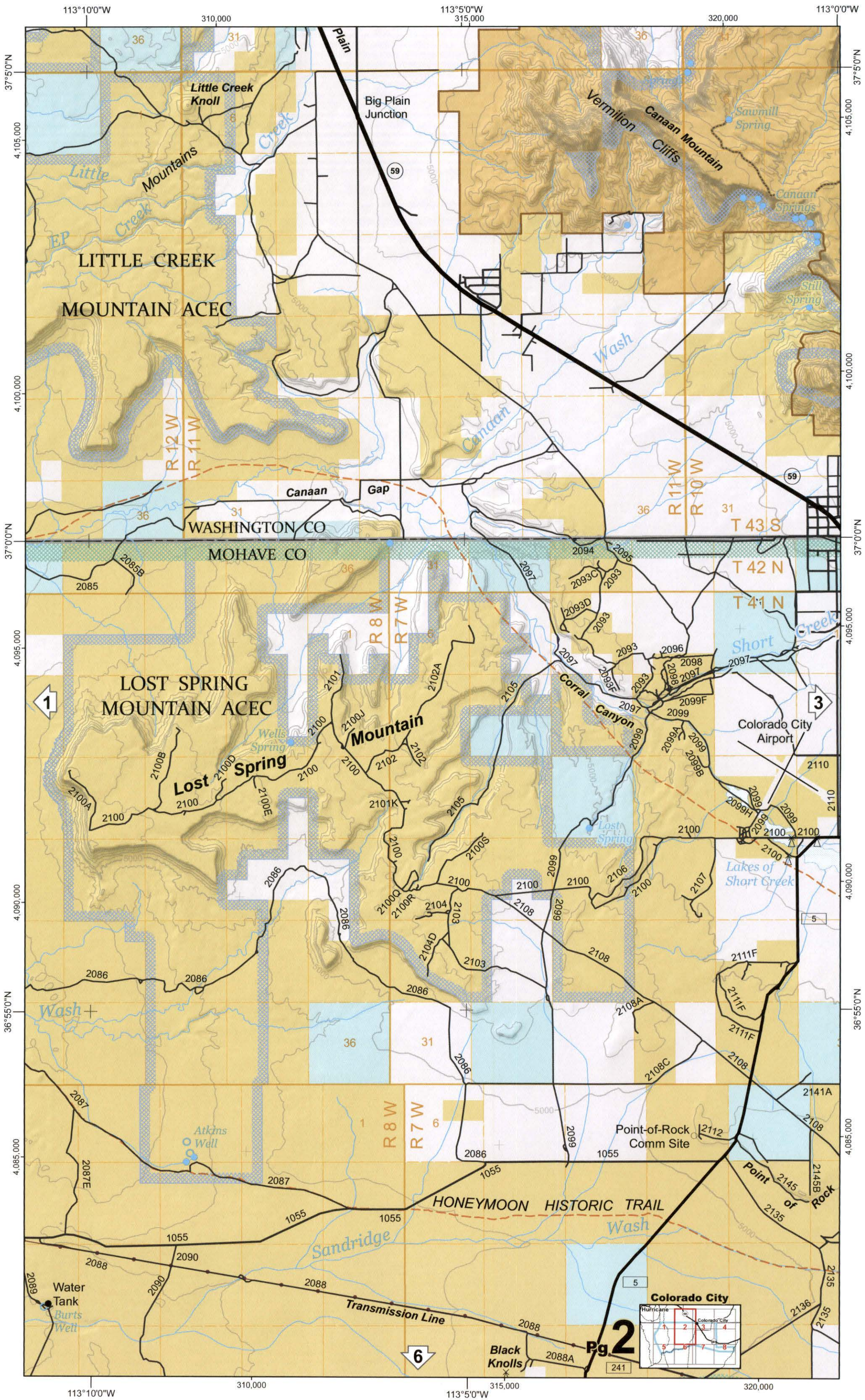
BLM Lands	National Park Service Lands	State Boundary	Primary Highway	UTV or ATV Trail
BLM Wilderness	Tribal Lands	County Boundary	Secondary Highway / Main Gravel Road	Motorcycle or Bike Trail
BLM Wilderness Study Areas	State Trust Lands	Colorado City Travel Management Area	Maintained Road	Hiking or Equestrian Trail
Private Lands	State, County, or City Recreation Areas	Open OHV area	Four Wheel Drive Road	Non-motorized Trail
		National Conservation Area		Historic Trail
		Area of Critical Environmental Concern		

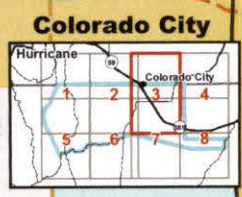
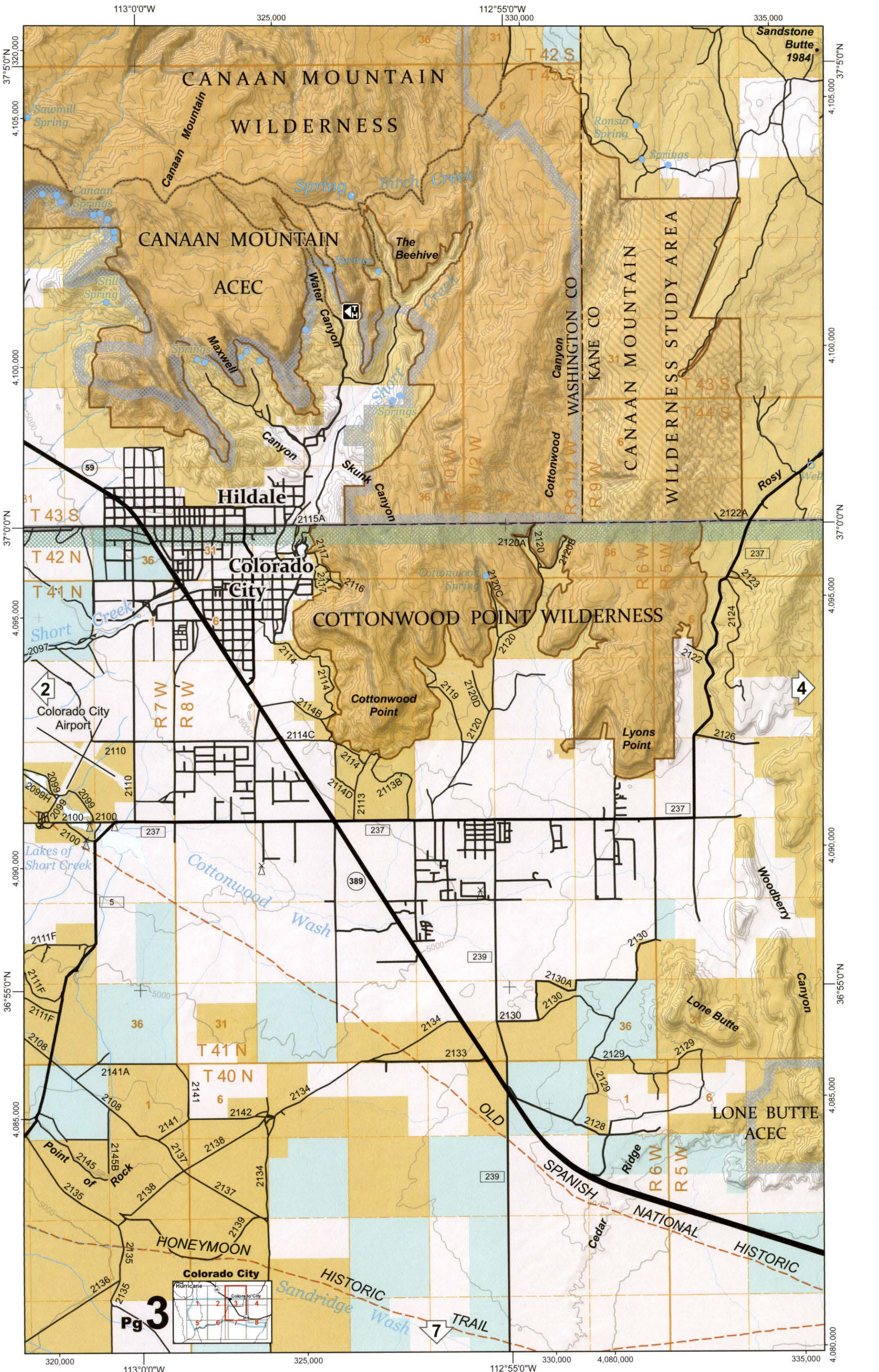
1069 BLM Route Number
299 County Road
91 State Highway

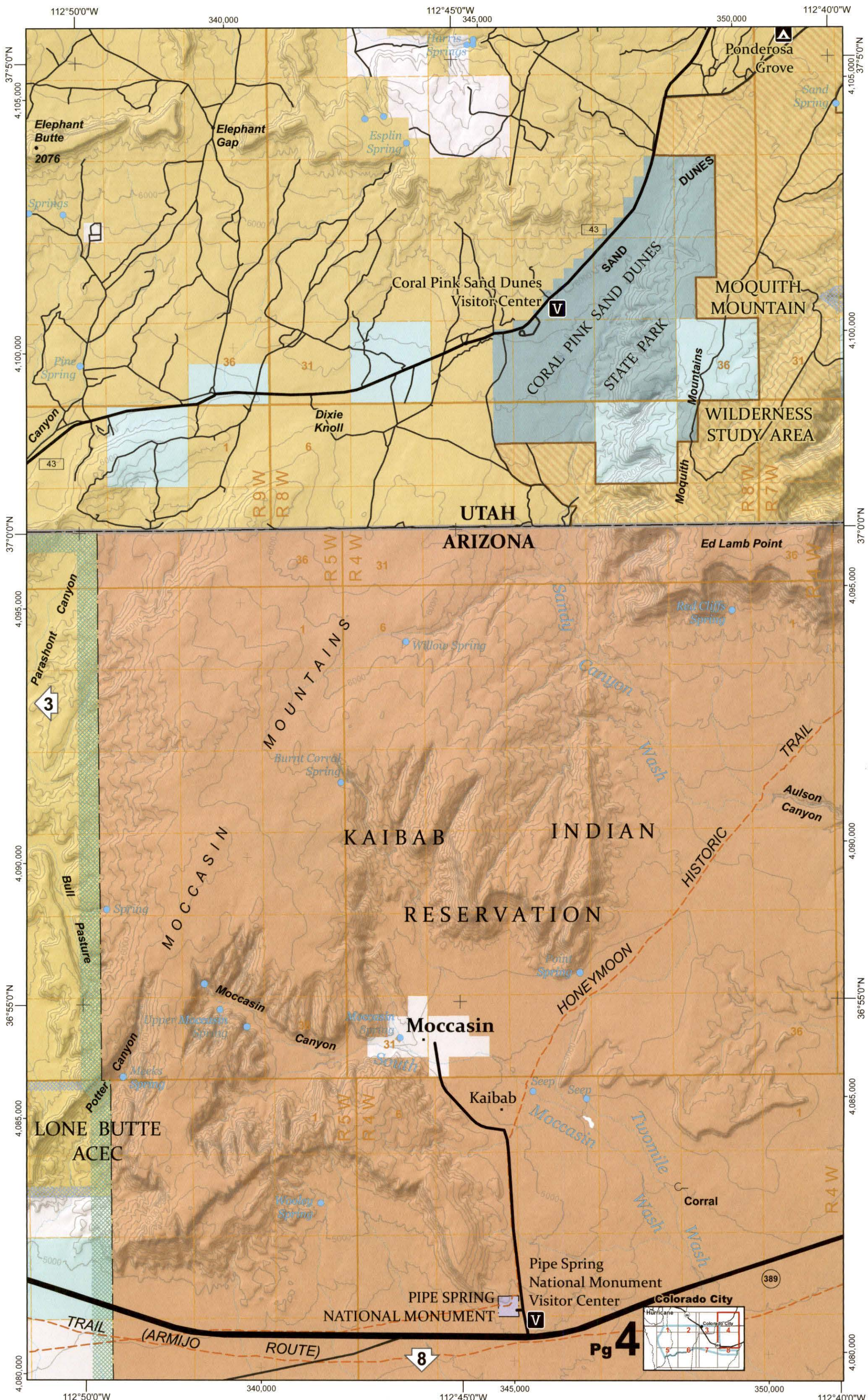


Pg 1









Elephant Butte
• 2076

Elephant Gap

Harris Springs
Esplin Spring

Ponderosa Grove

Sand Spring

Coral Pink Sand Dunes
Visitor Center

MOQUITH
MOUNTAIN

CORAL PINK SAND DUNES
STATE PARK

WILDERNESS
STUDY AREA

UTAH
ARIZONA

Parashont Canyon

Ed Lamb Point

MOCCASIN
MOUNTAINS

KAIBAB

INDIAN

RESERVATION

Bull Pasture

MOCCASIN

KAIBAB

INDIAN

RESERVATION

Moccasin

LONE BUTTE
ACEC

Potter Canyon

Moccasin

Moccasin Canyon

Moccasin Spring

Kaibab

HONEYMOON

HISTORIC

Aulson Canyon

LONE BUTTE
ACEC

Potter Canyon

Moccasin

Moccasin Canyon

Moccasin Spring

Kaibab

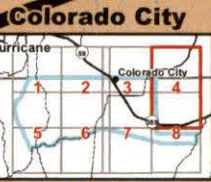
HONEYMOON

HISTORIC

Aulson Canyon

PIPE SPRING
NATIONAL MONUMENT

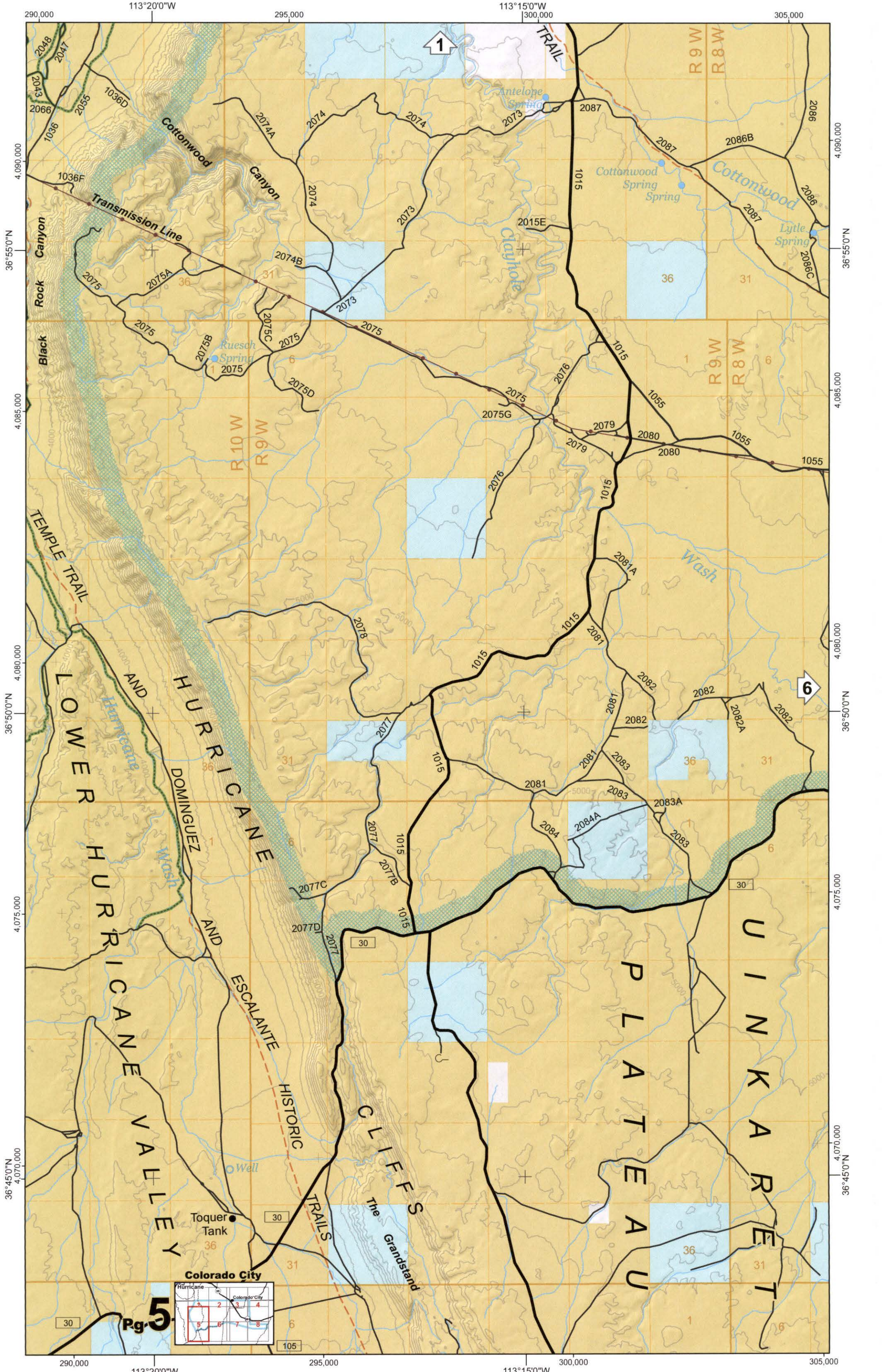
Pipe Spring
National Monument
Visitor Center



Pg 4

8

389



1

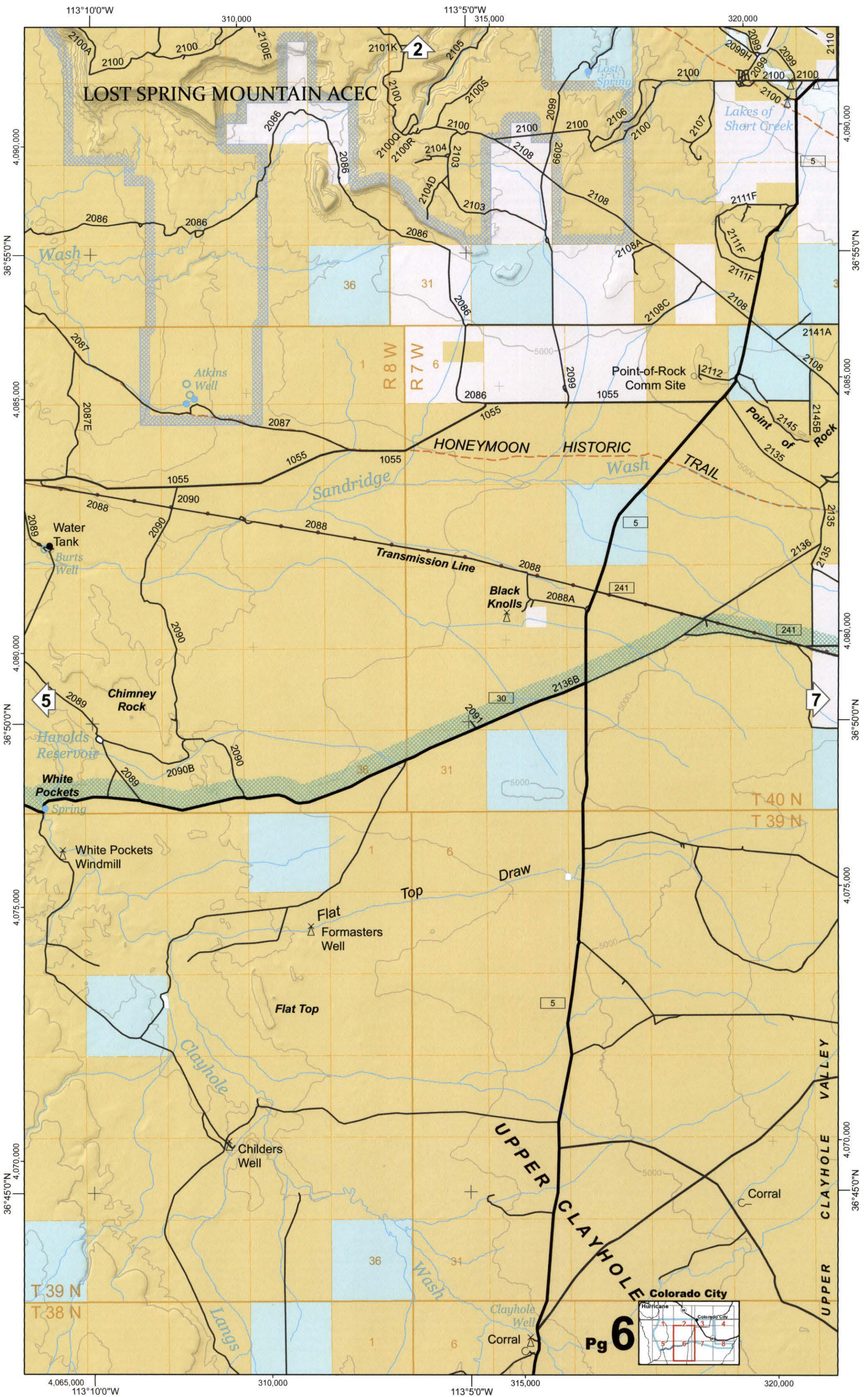
6

Pg. 5



Colorado City

Hurricane



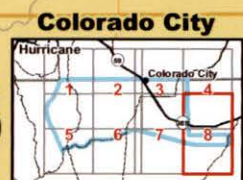
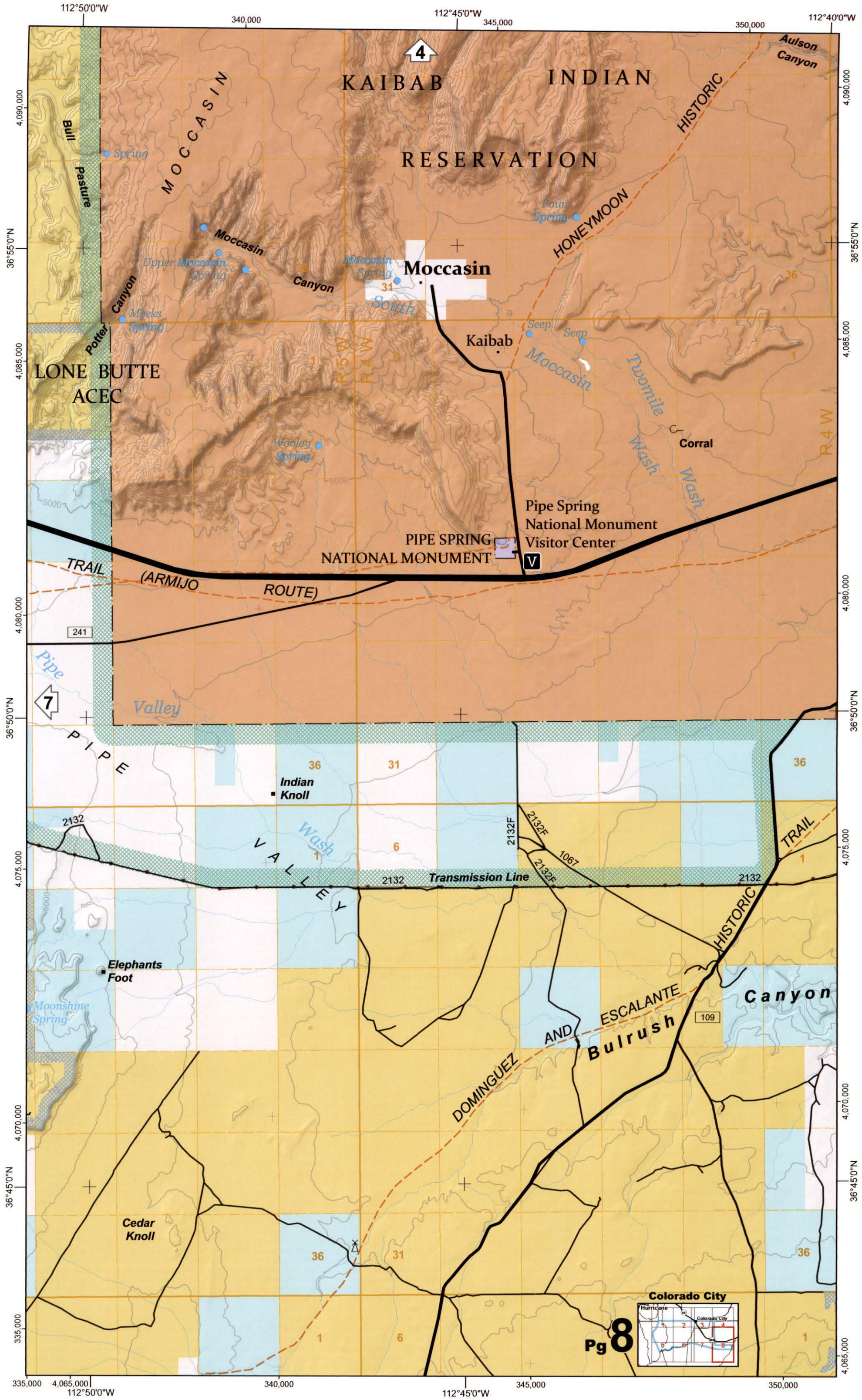
LOST SPRING MOUNTAIN ACEC

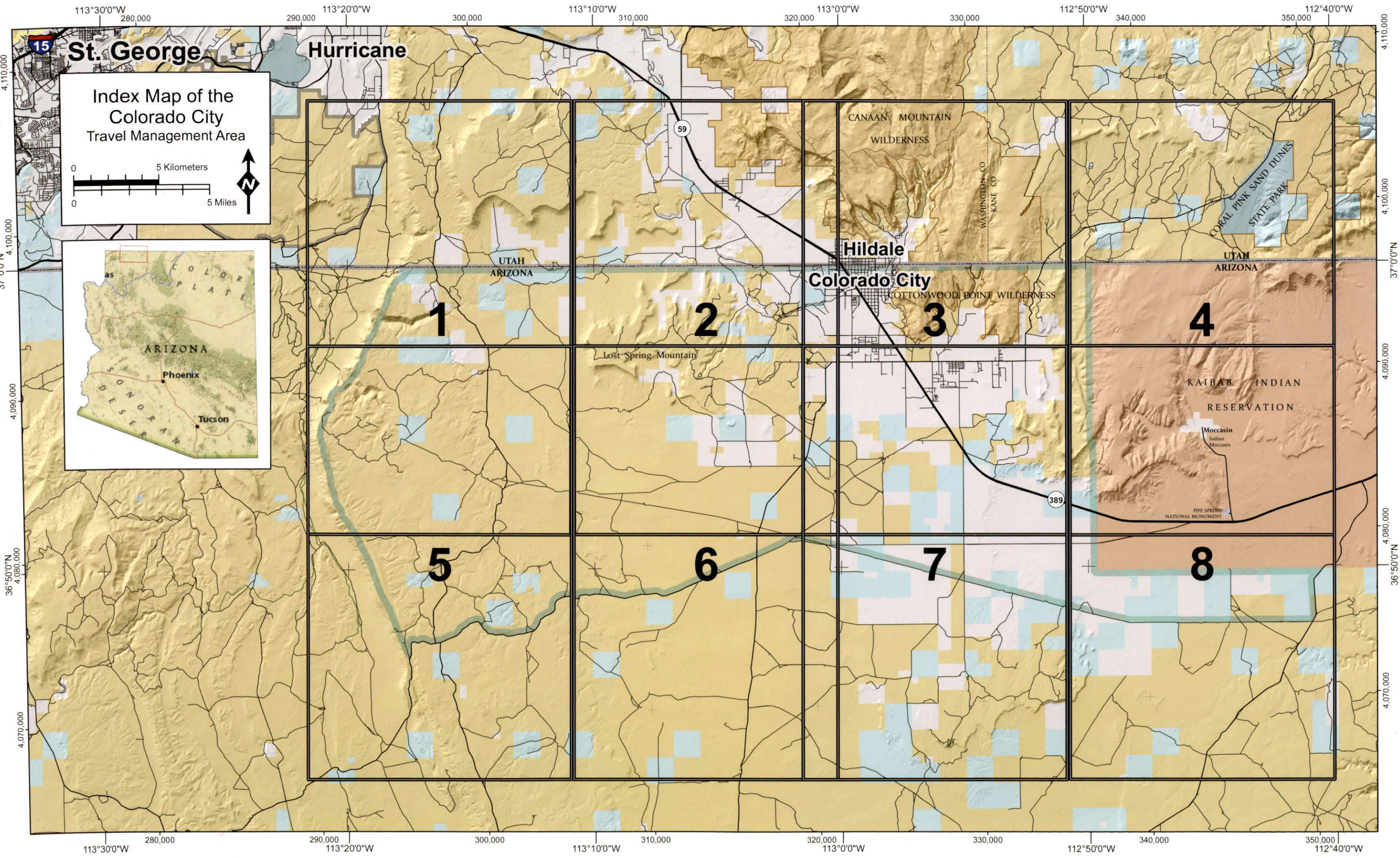
HONEYMOON HISTORIC TRAIL

5

7







Index Map of the Colorado City Travel Management Area

0 5 Kilometers
0 5 Miles

